

中国家电及消费电子博览会参会境外人员进入国际商务合作区指引

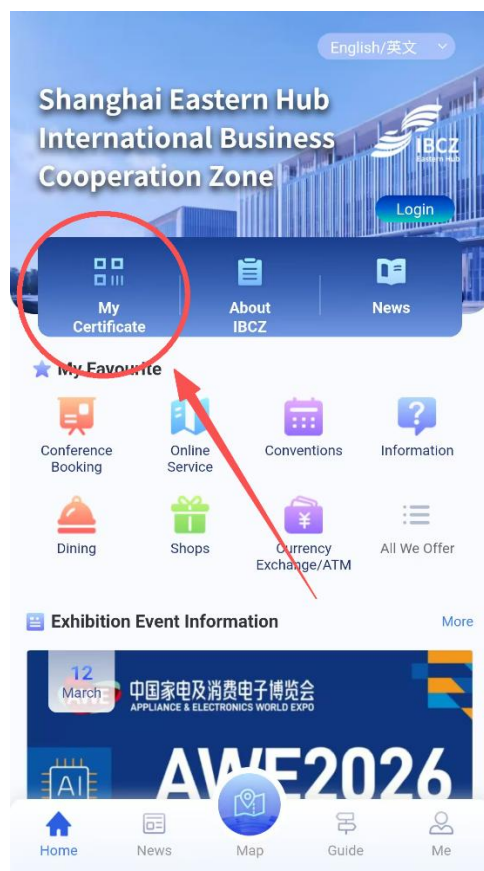
Guidelines for Overseas Participants Entering the International Business Cooperation Zone (IB CZ) for the Appliance & Electronics World Expo (AWE)

1. 获得邀请备案凭证

境外人员可使用申请时预留的邮箱登录综合服务平台（个人端网址：<https://ibcz.pudong.gov.cn/ehub-personal-front/#/home>），在“我的凭证”模块下载邀请备案凭证 PDF 至本地使用；提交申请的国内机构也可登录综合服务平台，在“邀请备案凭证管理”模块下载邀请备案凭证 PDF 转发拟入区境外人员使用。

1. Obtain the Invitation Registration Certificate (E-PASS)

Overseas participants can log in to the comprehensive service platform (User Portal URL: <https://ibcz.pudong.gov.cn/ehub-personal-front/#/home>) with the email reserved during application, and download the PDF of the invitation registration certificate (E-PASS) in the "My Certificate" module for local use; domestic institutions that submitted the application can also log in to the comprehensive service platform, download the PDF of the Invitation Registration Certificate (E-PASS) in the "Invitation Registration Certificate Management" module, and forward it to the overseas participants who plan to enter the zone for use.



网页截图

Screenshot of IBCZ platform



邀请备案凭证样张

Sample of Invitation Registration Certificate (E-PASS)

2. 境外值机

境外人员凭邀请备案凭证，即可在境外办理前往上海浦东国际机场的值机手续，若工作人员不清楚“凭有效邀请办理值机”政策，可请柜台工作人员查询国际航空运输协会（IATA）旅行信息手册验证；

2. Overseas Check-in

Overseas participants could check in for their flight to Shanghai Pudong International Airport (PVG) using the invitation registration certificate (E-PASS). If the staff are not familiar with the policy of "check-in with a valid invitation", they can ask the counter staff to check the International Air Transport Association (IATA) Travel Information Manual for verification.

3. 抵达浦东国际机场

抵达浦东国际机场后，无需在机场办理入境手续，可根据标识指引前往国际商务合作区专用休息室候车；

3. Arrival at PVG

After arriving at Pudong Airport, there is no need to go through immigration procedures at the airport. You may follow the sign instructions to proceed to the special lounge of the International Business Cooperation Zone and wait for the shuttle bus.



指引标识

Sign Instructions



国际商务合作区专用休息室

Special Lounge of the IBCZ

4. 专车送至国际商务合作区

在休息室根据工作人员指引登记托运行李后凭邀请备案凭证乘车前往国际商务合作区,机场集团负责将托运行李物品通过专用接驳车送到国际商务合作区;

4. Dedicated transfer to IBCZ

After registering checked luggage in the lounge under the guidance of the staff, take the bus to the International Business Cooperation Zone with the invitation registration certificate (E-PASS). The Airport Group is responsible for transporting the checked luggage to the International Business Cooperation Zone via shuttle buses.

5. 国际侧查验入区

坐车抵达国际商务合作区国际侧入区区域,持国际旅行证件和邀请备案凭证,经查验后入区。

5. Entry Inspection at International Side

Upon arriving at the international side entry area of the International Business Cooperation Zone by shuttle bus, present the international travel document and the invitation registration certificate (E-PASS) for inspection before entering the zone.



国际侧入区区域

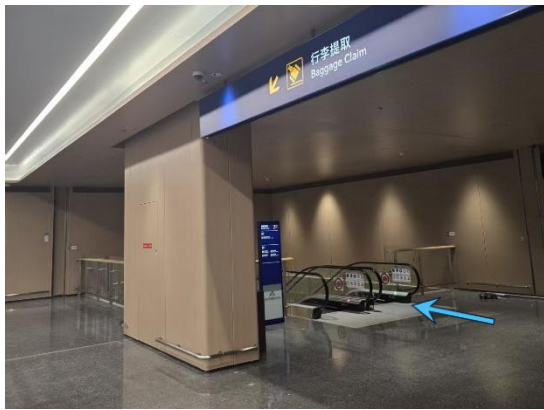
Entry of International Side

6. 提取行李

入区后乘坐扶梯至一楼行李提取处,提取托运行李。行李房旁设有酒店礼宾部,境外人员可按需预约行李直送酒店服务。

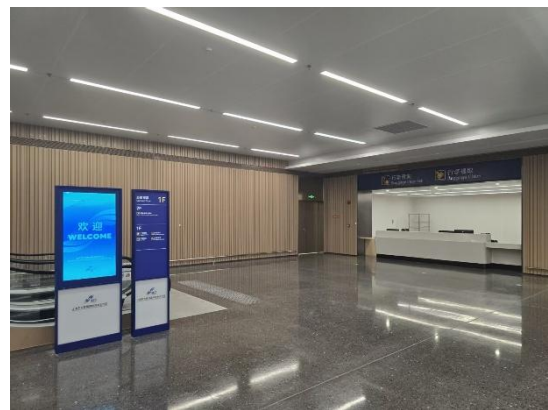
6. Claim Luggage

After entering the zone, take the escalator to the luggage claim area on the first floor to collect your checked luggage. A hotel concierge desk is located next to the luggage room, and overseas participants may reserve the luggage direct delivery service to the hotel as needed.



扶梯至行李提取处

Escalator to the Luggage Claim Area



行李提取处

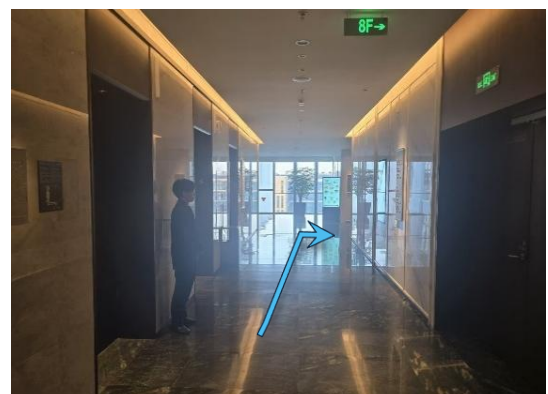
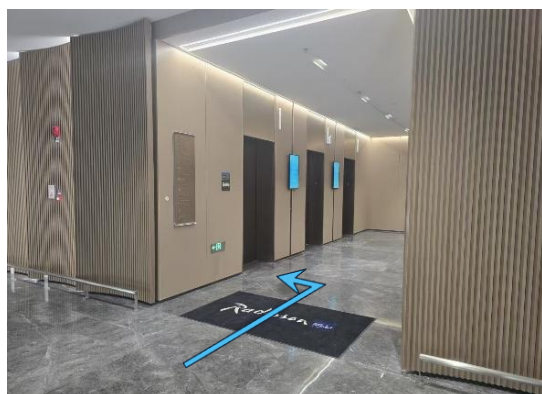
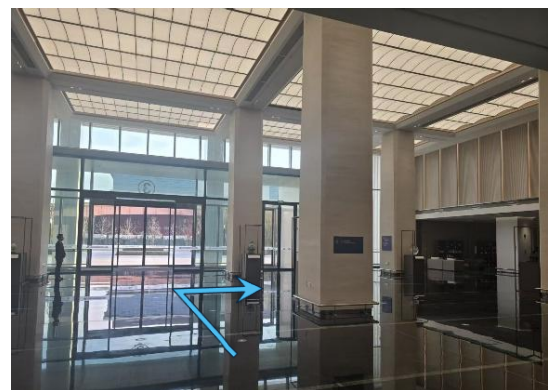
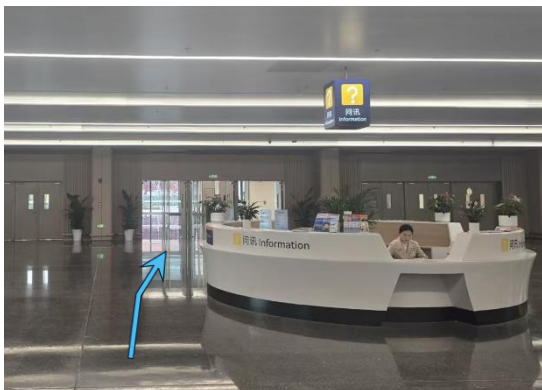
Luggage Claim Area

7. 前往酒店

提取行李后，可根据标识指引，前往酒店专用电梯，至八楼前台办理入住。

7. Proceed to the Hotel

After collecting your luggage, please follow the signs to the hotel's dedicated elevator, and proceed to the 8th floor for check-in at the front desk.



行李提取处至酒店路线

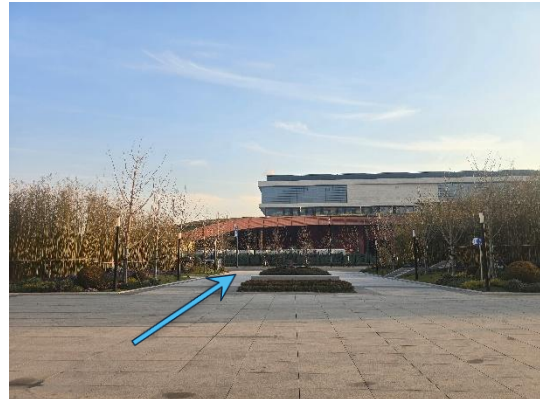
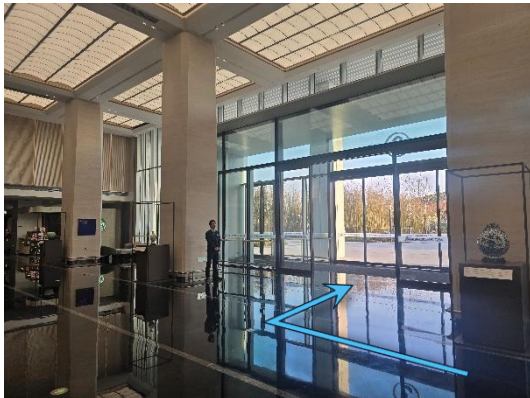
Directions from Baggage Claim Area to Hotel

8. 前往中国家电及消费电子博览会展馆

从酒店房间乘坐电梯下至一楼，下电梯后经南侧出入口出大楼，即可步行抵达中国家电及消费电子博览会展馆。

8. Route to AWE Exhibition Venue

Please take the elevator from your hotel room to the ground floor. Upon exiting the elevator, proceed through the south exit of the building, you will then be able to reach the Appliance & Electronics World Expo (AWE) Exhibition Venue within walking distance.



酒店至中国家电及消费电子博览会展馆路线
Directions from Hotel to AWE Exhibition Venue